

Ways to Give

# Support Embrave Agency to End Violence



*“Embrave is the reason  
why survivors like me  
don’t give up hope.”*

WES, FORMER RESIDENT

**EMBRAVE**  
AGENCY TO END VIOLENCE

## Embrace Brave. Inspire Bravery.

Our organization has provided a broad range of supports to survivors of violence and contributed to thought leadership on how to eradicate gender-based violence for almost 40 years. For decades, we have tirelessly fought to raise awareness of – and end – individualized and systemic violence in our communities.

With the support of a caring community, we have provided emergency shelter, counselling, and advocacy to more than 49,000 survivors and their children. Your donation will provide vital supports that will transform the lives of survivors of violence today and help create safer communities in the future.

We know that anyone can experience violence and we believe that everyone deserves a life free from violence. Your donation will help ensure that no one is left behind.



## How You Can Help

Your gift will provide vital supports that will transform the lives of survivors today and help create safer communities in the future.

If you have any questions regarding Ways to Give, please contact:  
[development@embrace.ca](mailto:development@embrace.ca)

For more information, visit  
[embrace.ca/support us](https://embrace.ca/support-us)

*"I support Embrace because I know that my gifts are making a difference for survivors in my community. I believe that giving reinforces values—like kindness— that I want to instill in my children."*

SARAH-JAYNE, CHANGEMAKER

## Support Embrace with a One-Time Donation

Your one-time donation will help survivors of gender-based violence chart a new course for the future.



**\$25**

A Welcome Kit for a new shelter resident and their child.



**\$50**

Healthy snacks for children's lunches.



**\$100**

Fresh bedding for a shelter resident.



**\$250**

One-to-one counselling supports for a survivor for one month.



**\$500**

Linens, bedding and kitchenware for a survivor moving into their new home in the community.

## Join the Kind Collective Monthly Giving Program

Join with your monthly gift today and become a part of the Kind Collective, a coalition of dedicated individuals driving positive change in our community. The ongoing support of monthly donors helps to ensure that we can meet the most urgent needs of survivors of violence and their children, without delay.

### Reasons to Join the Kind Collective:

- It's easy and convenient. You choose the gift level and payment schedule that's right for you. Your gift will be processed automatically every month.
- You can change, cancel, or suspend your donations at any time.
- Your gifts provide a stable source of funding that Embrace can count on, so survivors of violence can continue to count on us.

### Benefits you will receive:

- Exclusive updates and behind-the-scenes videos highlighting the impact of your kindness.
- A consolidated annual receipt in February for income tax purposes.
- Recognition in our Impact Report and on our website.
- The knowledge that your support is helping to save lives every single day.

For more information about Ways to Give please visit [Embrace.ca/Support Us](https://www.embrace.ca/support-us)

# Adopt-a-Room Program

The Adopt-A-Room Program offers a year-long sponsorship of one of our bedrooms, child and youth rooms, shared living room areas, or community kitchens. Adopt-A-Room sponsors have an immeasurable impact on survivors and their children residing at Embrace.

Your gift enables us to ensure that survivors who turn to Embrace for shelter are welcomed into a bright, welcoming space outfitted with all the comforts of a family home. Your gift provides survivors with an opportunity to focus on what's most important—their well-being and their futures.

## Benefits of Sponsorship

We are proud to recognize Adopt-A-Room sponsors with the following benefits:

- Signage in a high-traffic area with your name and adopted room.
- Recognition on our website.
- Photos, information and logo (pending approval) to include in your newsletters or public relations materials.
- First right of renewal each year.



### BEDROOM SPONSOR: \$1,000

Be an annual sponsor for one of our bedrooms.

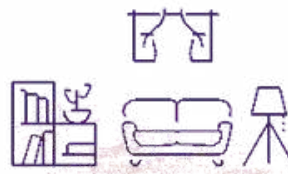
Your sponsorship supports a bedroom for survivors of violence throughout the year. While staying at Embrace survivors have access to regular meals prepared by a food and nutrition worker, food supplies and pantry items, a kitchen area, laundry facilities, play areas, comfortable common spaces, transportation to and from medical and legal appointments, as well as counselling, support, and advocacy provided by our dedicated staff team.



### CHILD & YOUTH ROOM SPONSOR: \$5,000

Be an annual sponsor for one of our two child and youth rooms.

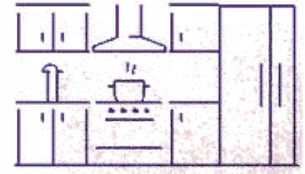
These spaces are the main hub of children's activities at Embrace. These colourful rooms are fully appointed with areas for dramatic play, tactile and sensory stimulation, art, homework, and quiet time. This is where our dedicated Child and Youth Workers provide childcare, facilitate homework clubs, and engage children residing at the shelter in educational activities and free play.



### LIVING AREA SPONSOR: \$10,000

Be an annual sponsor for one of our two living areas.

Our centrally located living areas include congregate dining areas where residents gather over shared meals, and living rooms outfitted with televisions, comfortable seating, and computers. Embrace's living areas are a safe space where residents gather to kick off their shoes in front of late-night movies, and chat in front of the tv while children play at their feet.



### KITCHEN SPONSOR: \$10,000

Be an annual sponsor for one of our two communal kitchen spaces.

Every year we serve over 600 meals to survivors who call Embrace their home while escaping violence. Kitchens are open 24-hours a day and fully stocked with staple food items, snacks, and beverages. Each kitchen is equipped with a pantry for families to store their own groceries, in addition to at least one meal a day that Embrace provides. The kitchen is the heart of Embrace, as it is a place where survivors congregate, connect, and support one another over shared experiences.

## Join The Legacy League


For more than three decades, Embrave has been at the forefront of the movement to end gender-based violence in Peel Region. Your legacy gift will ensure that we can continue to respond to the urgent and evolving needs of survivors of violence and their children through support, advocacy and action.

Your legacy gift will ensure that Embrave will

continue to support survivors of gender-based violence in the years to come.

After your family and loved ones are taken care of, if you can, please consider leaving a legacy gift to Embrave in one of the following ways:

- > **Bequests: A gift in Your Will**
- > **Life Insurance**
- > **Registered Retirement Savings Plan (RRSP)/ Registered Retirement Income Plan (RRIF)/ Tax- Free Savings Accounts (TFSA)**
- > **Real Estate and Property**



*"I am alive today because of Embrave."*

SANGEETA, FORMER RESIDENT

For more information about Ways to Give please visit [Embrave.ca/Support Us](https://Embrave.ca/SupportUs)

**YES! I/We want to help Embrace to make a difference in the lives of survivors of violence.**

## Choose Your Gift

### SINGLE DONATION

I would like to make a one-time donation.  
Today I'd like to give:

- \$25
- \$50
- \$75
- \$100
- \$250
- Other (Please specify) \_\_\_\_\_

### MONTHLY DONATION

I/We would like to make a monthly donation.  
I authorize Embrace to receive the following amount each month:

- \$5
- \$10
- \$25
- \$50
- \$100
- \$200
- Other (Please specify) \_\_\_\_\_

All gifts of \$1000 or more will be identified in Embrace's Impact Report as Leadership Donations.

## Select Your Method of Payment

### ONLINE

- Donate online visit: [tinyurl.com/yxwpm55u](http://tinyurl.com/yxwpm55u)

### CHEQUE

- I've enclosed a void cheque for our monthly donation.
- I've enclosed a cheque made payable to Embrace Agency to End Violence for my one-time gift.

### CREDIT CARD

- Please charge my credit card.
  - VISA
  - MasterCard

Name on card \_\_\_\_\_

Card Number \_\_\_\_\_

Expiry \_\_\_\_\_

Registered Charitable N°.: 10751 0059  
RRO001

**Thank You!**



#### Embrace

P.O. Box 45070 Mississauga, ON L5G 1C9  
development@embrace.ca  
905.403.9691 ext.2223

**embrace.ca**

**EMBRAVE**  
AGENCY TO END VIOLENCE

# Corporate Opportunities

Your organization can make a difference. Your leadership in corporate philanthropy enables Embrace to be a leader in ending gender-based violence.

Embrace Agency to End Violence has provided shelter, support, counselling and advocacy to survivors of gender-based violence and their children in Peel Region for more than three decades. As our organization continues to evolve, we recognize that our ability to create safer communities into the future rests upon the strength of the partnerships we build with you, our charitable supporters.

Your support enables us to provide life-changing – and life-saving – programs and services, lead region-wide education and advocacy initiatives, and drive change on the issue of gender-based violence in the Region of Peel and beyond.

The supports we provide to survivors and their children are made possible by the generosity of our donors. Our Sexual Support Program, Emergency Crisis Lines, and Public Education programs are funded entirely by philanthropic contributions.

We are here to help support your corporate social responsibility objectives through your partnership with Embrace. Embrace works with our corporate partners to develop opportunities that meet social investment goals and are in alignment with our vision for a future without gender-based violence in the Region of Peel. Please contact us if your organization is interested in joining us in the work to end gender-based violence in our communities. Together we will drive region-wide change and sustain the provision of responsive, leading-edge supports and services for survivors of gender-based violence in our communities.

Corporate Opportunities include:

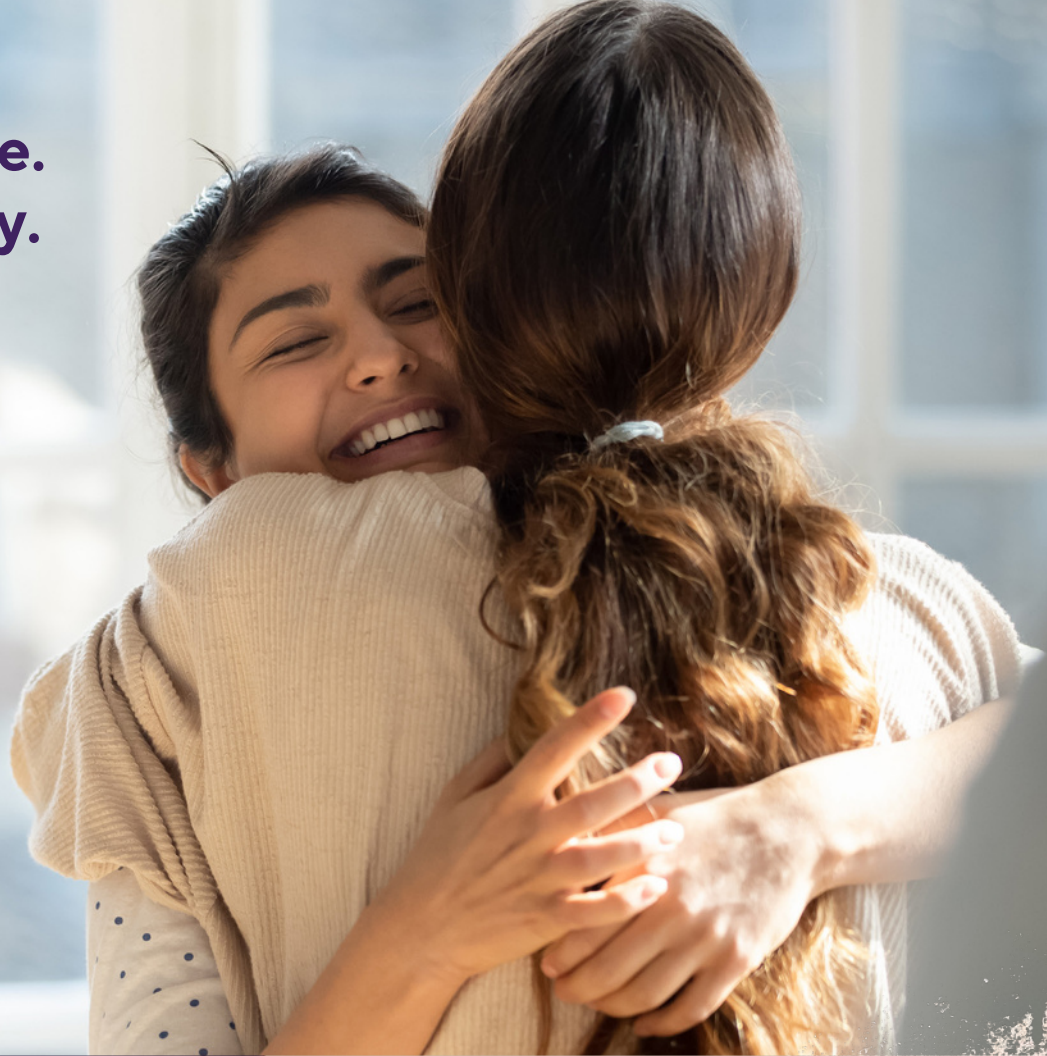
- > Sponsorships
- > Cause Marketing Campaigns
- > Donations of Goods and Services
- > Employee/ Corporate Gift
- > Matching

*“Our company recognizes that we play an important role in our community, and we aim to make the community in which we operate a better place. We have supported Embrace for years, and we truly value this relationship as it enables us to make a meaningful contribution to our community through both financial contributions and rewarding volunteer initiatives.”*

CORPORATE PARTNER

For more information about Ways to Give please visit [Embrace.ca/Support Us](https://www.embrace.ca/SupportUs)

**Embrace Brave.  
Inspire Bravery.**



Embrace Agency to End Violence is an anti-violence organization providing shelter, counselling and advocacy supports for women, Two-Spirit, gender queer, trans and non-binary folks and their children experiencing any form of violence in the Region of Peel and beyond. We support survivors with and without children.

**embrace.ca**

**Embrace  
Agency to End Violence**

P.O. Box 45070,  
Mississauga, ON L5G 1C9

Email: [development@embrace.ca](mailto:development@embrace.ca)  
Telephone: 905 403 9691 Ext. 2223  
Fax: 905 403 9808

---

 [@embrace\\_ca](https://twitter.com/embrace_ca)

 [/ @embrace.ca](https://www.facebook.com/embrace.ca)

Registered Charitable N°:  
10751 0059 RR0001